

HOW TO WEAR A NON-MEDICAL MASK

Non-medical masks, including homemade cloth masks, can help prevent the spread COVID-19. They are another tool to use in places where it's difficult to keep two metres from other people for extended periods of time – such as public transit, grocery stores, pharmacies, hair salons, airplanes and some retail shops.

Masks do not replace proper hygiene, physical distancing or isolation to prevent the spread.

SAFELY PUTTING A MASK ON

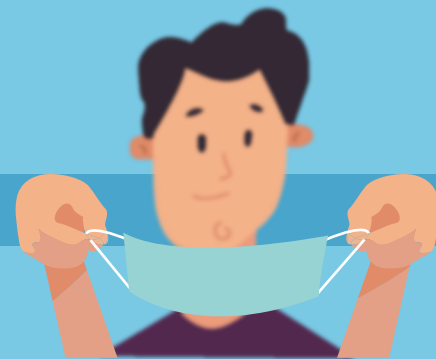


1



Wash/sanitize your hands.

2



Inspect the mask, holding it by the ties or loops. Discard if damaged or dirty.

3



Open fully to cover from the bridge of your nose to your chin.

4



Adjust the mask to your face so there are no gaps on the side.

5



If mask has stiff edge, pinch to close gaps between nose and mask.

6



Keep your nose, mouth and chin covered at all times. **Avoid touching the mask.**

SAFELY TAKING OFF A MASK



1



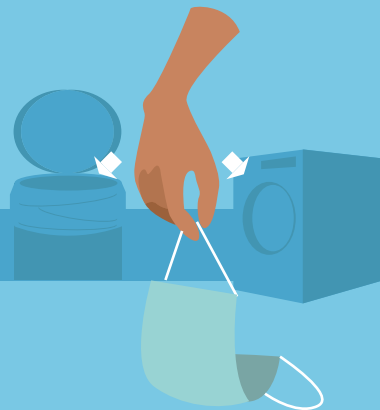
Wash/sanitize your hands.

2



Remove it from the back by releasing ties or loops. Do not touch the front of the mask.

3



Discard the mask immediately if disposable. Wash thoroughly if reusable.

4



Wash/sanitize your hands.

5



FOR MORE INFORMATION ON WEARING AND CARING FOR YOUR MASK

alberta.ca/masks

