

COALBANKS CHRONICLE

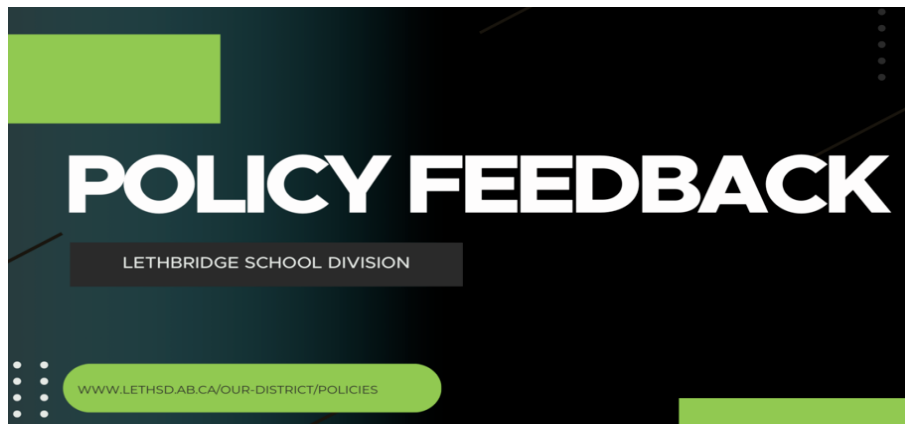
December 2024

Inside this issue:

Reminders
Kindergarten registration
School Council
Christmas concert
Spanish News
Angel Tree
Sock Collection

Dates to Remember

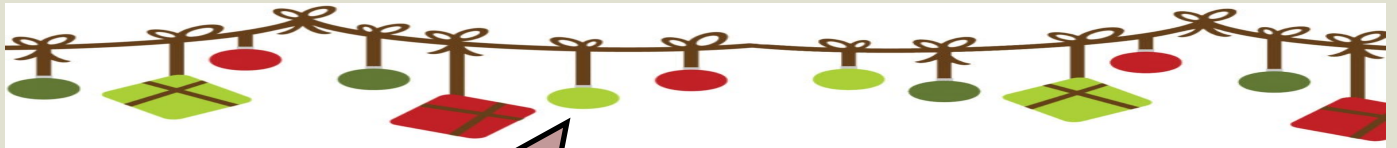
Dec 6—Last day to purchase Christmas concert tickets
Dec 10—6:00pm Christmas Concert last name A-K
Dec 11—6:00pm Christmas Concert last name L-Z
Dec 20—Spirit Day, cozy PJ day
Dec 20—12:00pm Students dismissed for Christmas break
Dec 21—Jan 5—Christmas Break
Jan 6—Classes Resume



Lethbridge School Division, through the Policy Advisory Committee, is seeking feedback on a number of policies, procedures and appendixes.

To share your feedback please [CLICK HERE](http://www.letbsd.ab.ca/our-district/policies)






Kindergarten Registration

Kindergarten Registration:
Opens January 20 2025

Please check our [School website](#)
and the [School Division website](#)

Spirit Day
PJ day
 Friday December 20th

Wear your PJ's
to school today!



Pajama Day

Lunch & Snacks

Please remember to send
healthy choices in your
child's lunch

Follow this link for ideas
[MyHealthAlberta](#)

School Council

Our next meeting is January 15th @ 6:00pm in
The Commons Area

The minutes, agendas & information about school council
can be found [here](#).

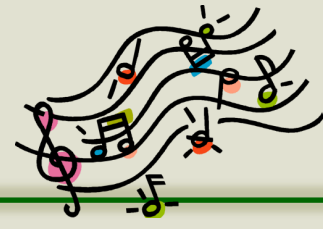
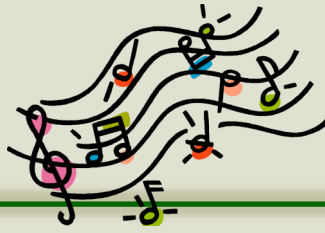
As always, if you have an questions or concerns for School
Council, please email ce.scpres@lethsd.ab.ca

January Hot lunch—Mary Brown's

Tuesday January 21, KB, KD and Grade 1
 Wednesday January 22, KA, KC and Grades 2/3
 Thursday January 23, Grades 4/5

All orders must be made through [School Cash Online](#)
 between January 7th & January 14th *NO late orders can be accepted





Christmas Concert

Our Christmas concert is being held over 2 nights:

Students with the last names starting with A-K will be performing on Tuesday, December 10th from 6:00-7:00pm. *doors open 5:45pm

Students with last names starting with L-Z will perform on Wednesday, December 11th from 6:00-7:00 pm. *doors open 5:45pm

Ticket Sales

Tickets are limited to 2 tickets per family at a cost of \$5.00 per ticket

Tickets will go on sale starting on Monday, November 25th until Friday, December 6th. Tickets will need to be purchased at the office between 8:00 am and 4:00 pm Monday—Thursday and Friday from 8:00-12:00 pm. Any tickets not purchased by December 6th will be available to other families on a first-come-first-serve basis on December 9th from 8:00am to 4:00pm (maximum of 2 additional tickets per family, available until tickets are sold).

The school will only accept cash and please bring the correct amount

*Due to the gym capacity no strollers will be permitted in the gym for the evening performances, younger siblings may sit on your lap

*We know that this may limit the number of family members able to attend, but we will also be hosting an afternoon performance on the 10th and 11th from 1:30-2:30pm, free of charge for other family members.

Students with the last names A-K will be performing on the 10th in the afternoon, Students with the last names L-Z will be performing on the 11th in the afternoon.

*Afternoon performances for Kindergarten students will be by the day they attend school not the last name, for example if your student attends the Tues/Thurs program but last name starts with S they will perform in the Tuesday afternoon performance and also the Wednesday night performance.



SPANISH CORNER DICIEMBRE



December in Spanish-speaking countries includes a variety of traditions, celebrations and special foods! Below are some examples.







Pan Dulce:

Pan Dulce is a type of sweet cake that is similar to the Italian version 'Panettone.' The sweet cake is in a tall cylinder shape with dried fruits in it similar to a fruitcake.

Lechón:

Lechón is a pit-roasted pig that is commonly eaten on Noche Buena, or Christmas Eve, in Cuba. This dish is often eaten with Mojo, a Cuban type of sauce made with cumin and garlic vinaigrette.



Charamicos:

In the Dominican Republic where fir trees are hard to come by, people create wooden handcrafted trees to decorate for Christmas. Some are white to mimic the snow, and others are vibrantly decorated with ornaments.



Parrandas:


In some places, Parrandas is a type of carol singing where groups go door to door belting songs typically to bachata and salsa music. People join along the way creating a large festival at the end. In other places, Parrandas is a carnival-like street party that happens on Christmas Eve.

.....

¡FELIZ DICIEMBRE!

★ **HAPPY DECEMBER!** ★





Coalbanks Elementary School is participating in the Lethbridge Family Services Angel Tree Christmas Campaign. Over the next few weeks these community helpers will give more than 4000 Lethbridge and area children and youth a bright and hopeful holiday. We are inviting the families of Coalbanks to participate in this amazing event by using the Angel that was in the Angel Tree bags sent home in November and purchasing a gift for the child described on the Angel. Your unwrapped gift can then be brought in, with the Angel taped to it until December 20th.

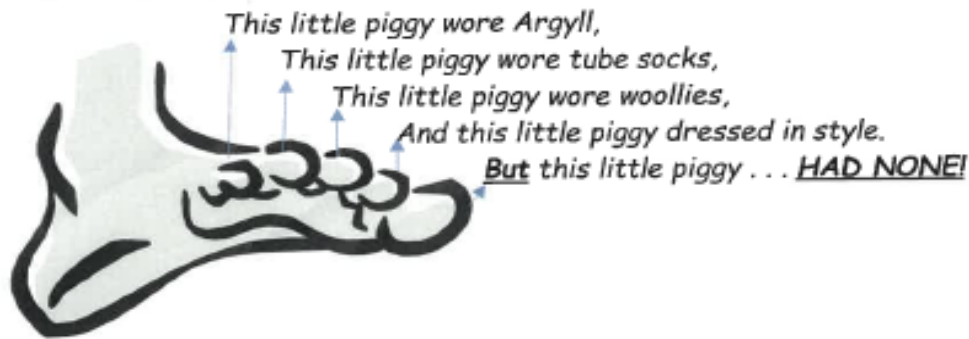
At Coalbanks school, Santa's little helpers will make sure they make it to a family in need.



Thank you all for your help in making the
Holiday Season at Coalbanks bright!



Another great Coalbanks opportunity in December is our Sock Drive. Students are encouraged to bring a pair of new socks to donate to our Lethbridge community. The socks are dispersed to multiple agencies within the community and then given to the people that need them most.



This little piggy wore Argyll,
This little piggy wore tube socks,
This little piggy wore woollies,
And this little piggy dressed in style.
But this little piggy . . . HAD NONE!

It's time for
**24th ANNUAL
OPERATION:**

SOCK IT TO 'EM

From November 1 to December 11, 2024
Nord-Bridge Seniors Centre, the Caretakers,
Maintenance & Support staff in Lethbridge & Area
schools are collecting **NEW SOCKS** to be
donated to local charities and those less
Fortunate for Christmas.



Please join them and make Someone's Christmas
a little bit warmer!

To donate, contact any Custodial staff at
your local school.

QUESTIONS?

Call Gail Petrie (403) 327-6520
Charlene Kocken (403) 329-3222

- Nord-Bridge Seniors Centre
- Lethbridge School Division
- Holy Spirit School
- Palliser Regional School

PRONGHORNS GO GIRLS YOUTH BASKETBALL CAMP

Sunday, December 8
@ University of Lethbridge
Centre for Sport and Wellness

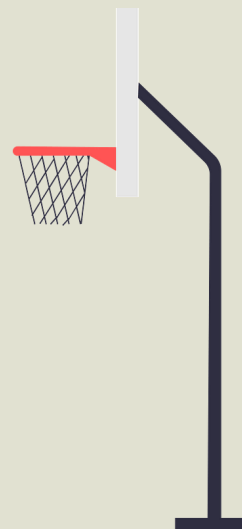


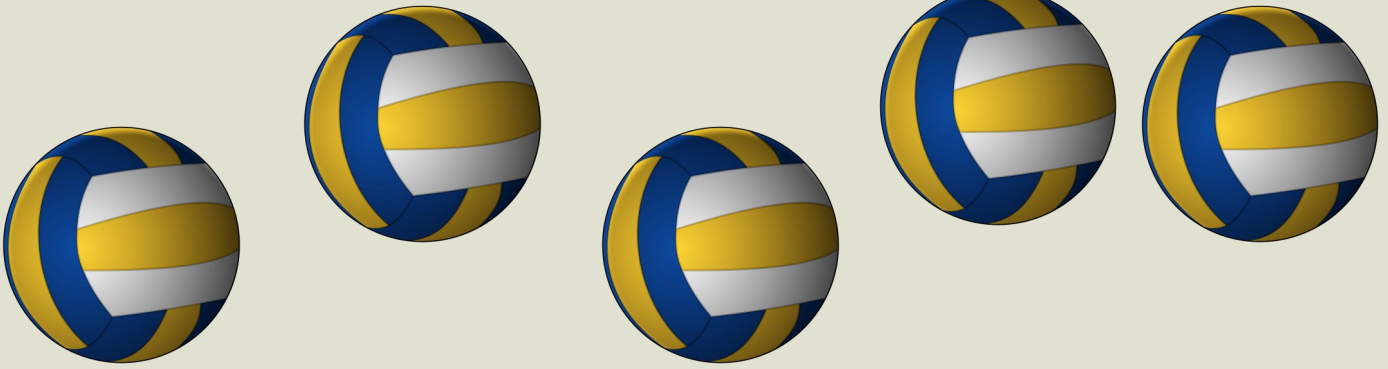
GRADES 1-3
3-4 PM
\$25 PER ATHLETE

GRADES 4-6
4-5:30 PM
\$35 PER ATHLETE



[GOHORNS.CA/
WBB-GOGIRLSCAMP](http://GOHORNS.CA/WBB-GOGIRLSCAMP)





LVC
LETHBRIDGE VOLLEYBALL CLUB

STARS
Volleyball

\$170
+GST

COACH CHRIS **COACH TYRA**

Cubs to Kodiaks

"Intro to Volleyball"

9U (Grades 1-3) & 12U (Grades 4-6)

Starting January 17th

REGISTER TODAY AT STARSVBALL.CA